

4

3

2

1

D

D

C

C

B

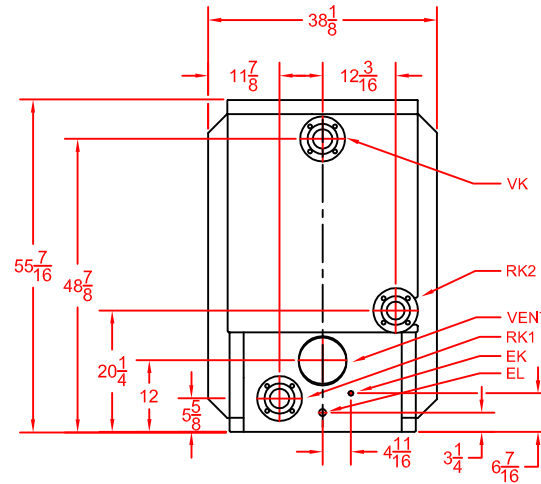
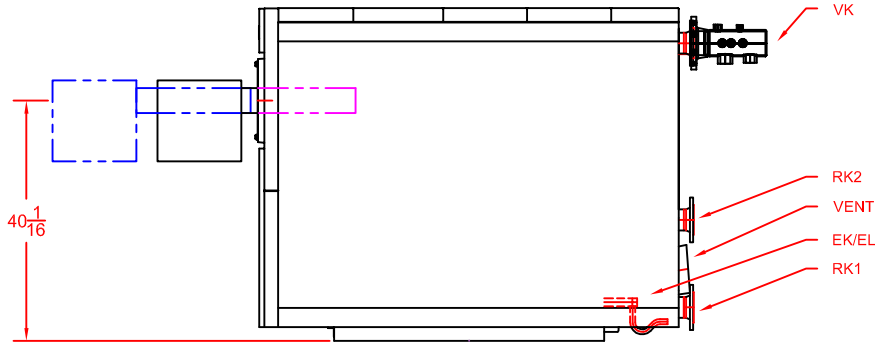
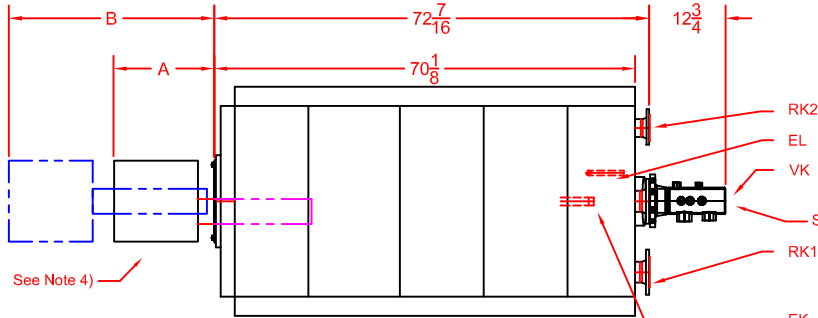
B

A

A

REVISIONS

REV	DESCRIPTION	DATE	APPROVED
A	Released	5/12/2009	



SB615-310 KW (1022 MBh)					
Make	Riello	Power Flame		Beckett	Power Flame 20 ppm
Model	RS28/M	J30A-10	C1-G-12	CG15	NP2-G-120
A	22 13/16	22 1/4	30 7/8	25 2/3	38 1/8
B	36 5/8	25 1/4	34 1/8	32 7/10	53 3/8

NOTE 1. 'A' Dimension is to the back of the burner.
'B' Dimension is the extraction dimension.

- All dimensions are in inches.
- Manifold provided, field assembly required.
- Burner shipped separately; field assembly required.

Bosch Thermotechnology Corp.
50 Wentworth Ave.
Londonderry, NH 03053
Phone: 603-552-1100

Tolerance

Fraction = $\pm\frac{1}{4}$ "
x.x = ± 0.030
x.xx = ± 0.015
x.xxx = ± 0.005

(UNLESS OTHERWISE NOTED)

This drawing is the exclusive property of Bosch Thermotechnology Corporation, it may not be reproduced or given to third parties.

Drawn By:
M SPIRIDIGLOZZI

Approved By:
J MILLS

Buderus

Bosch Group

Bosch Thermotechnology Corp.

DESCRIPTION

SB615-310 BOILER BURNER SPECIFICATION

SIZE

A

SCALE

3/8" = 1'

PART NO.

BTC 433006103

REV.

A

DATE 4/2/2009

SHEET 1 of 1

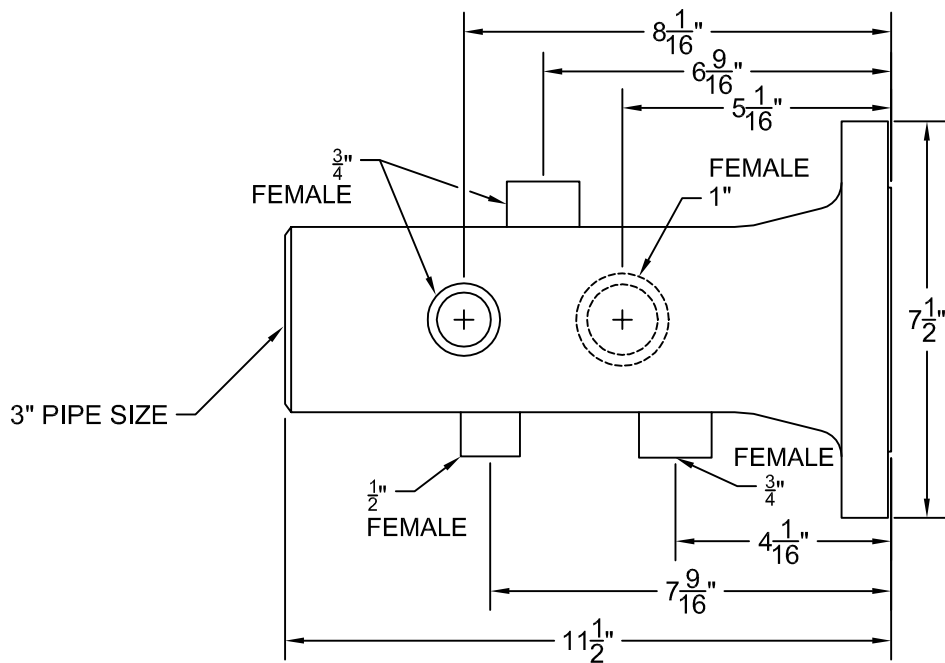
4

3

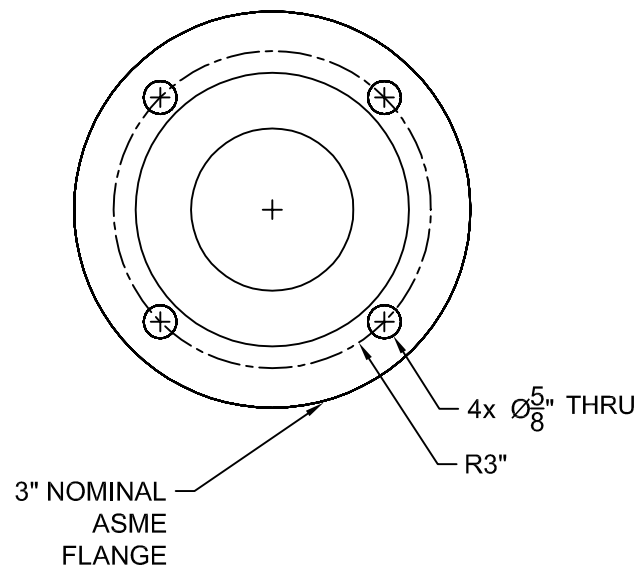
2

1

REVISIONS			
REV	DESCRIPTION	DATE	APPROVED
A	RELEASED	6/12/2009	



SIDE VIEW



END VIEW

NOTE
 1. All dimensions are in inches.
 2. All pipe sizes are NPT.

Bosch Thermotechnology Corp.
 50 Wentworth Ave.
 Londonderry, NH 03053
 Phone: 603-552-1100

Tolerance
 Fraction = ± 1/4"
 x.x = ± 0.030
 x.xx = ± 0.015
 x.xxx = ± 0.005

(UNLESS OTHERWISE NOTED)

This drawing is the exclusive property of Bosch Thermotechnology Corporation, it may not be reproduced or given to third parties.

Drawn By:
 M SPIRIDIGLOIZZI

Approved By:
 J MILLS

Buderus

Bosch Group

Bosch Thermotechnology Corp.

DESCRIPTION
 SB615-240/310 3" SUPPLY MANIFOLD SPECIFICATION

SIZE A	SCALE NTS	PART NO. BTC 433006113	REV. A
------------------	--------------	---------------------------	-----------

DATE 6/9/2009	SHEET 1 of 1
---------------	--------------